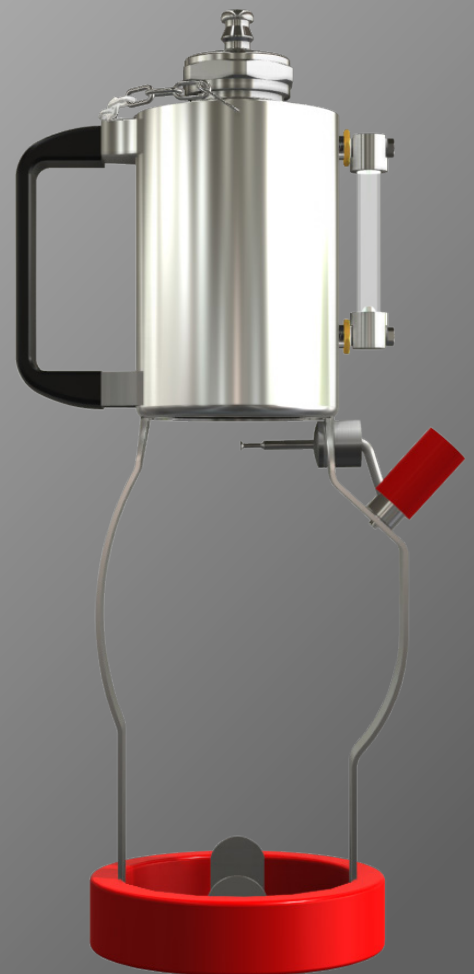


KEOFITT®

WORLD LEADERS IN STERILE SAMPLING™

STEAM BOILER | Item no. 550000

USER MANUAL



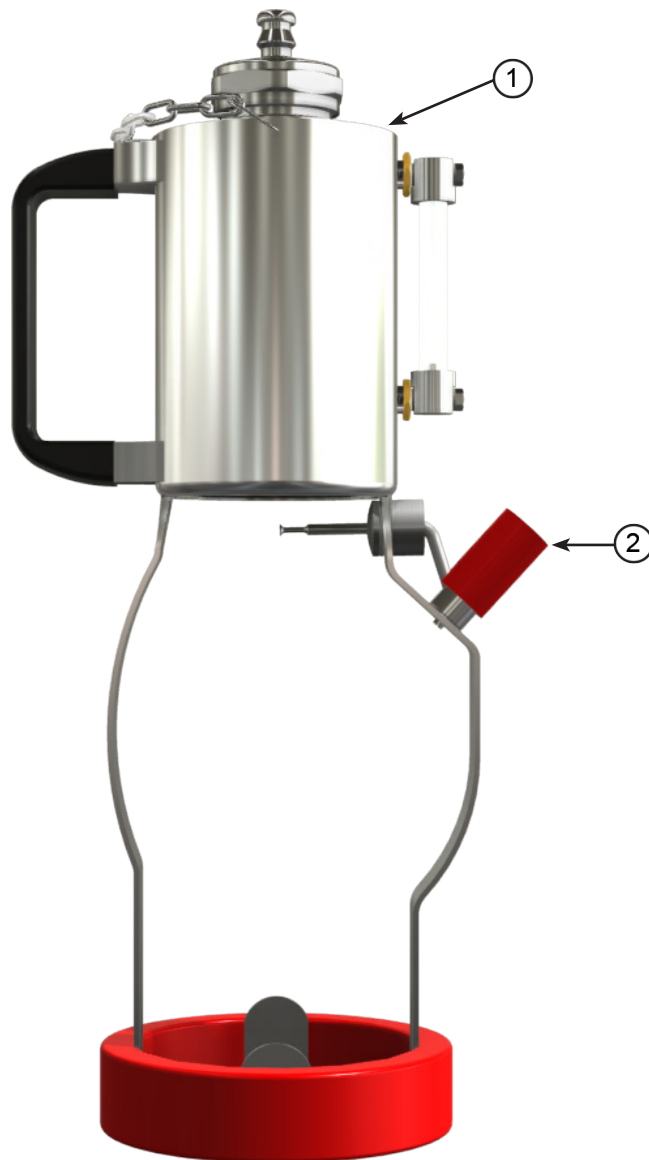
SOME PEOPLE WOULDN'T GAMBLE WITH THEIR SAMPLE™

INTRODUCTION:

MANUFACTURER: Keofitt A/S,
Industrivænget 6-8
5700 Svendborg
Denmark

TYPE: Steam Boiler, item no. 550000

The English version of this Manual is the governing version and it is the only authorized version. Consequently, KEOFITT cannot be held liable for other versions including translations of this Manual.



1. Pour max. 250 ml of water into the vessel (1).
2. Open the gas and ignite the burner with the red ignition button (2). Steam is generated in max. 4 minutes.
3. Make sure that the sampling valve is in a closed position.
4. Remove the rubber/st. st. caps from both hose pieces of the valve and connect the Teflon tube to the upper hose piece.
5. Connect the other end of the Teflon tube to the top of the Steam Boiler.
6. The sampling valve is sterilised after approx. 1 minute of steaming.
7. Remove the Teflon tube from the sampling valve and close the upper hose piece using an autoclaved rubber/st. st. cap.
8. Open the sample valve, draw your sample and close the sample valve afterwards.
9. After the required sample is drawn, it is advisable to rinse the valve, for example by means of hot water and/or steam again and let it dry before closing both hose pieces with autoclaved rubber/st. st. caps.

Note! It is recommended to use gloves during the sterilising process as both Steam Boiler, fittings and sampling valve become hot during the process.

For complete set of updated data sheets and manuals for Keofitt products please refer to our web page www.keofitt.dk

